

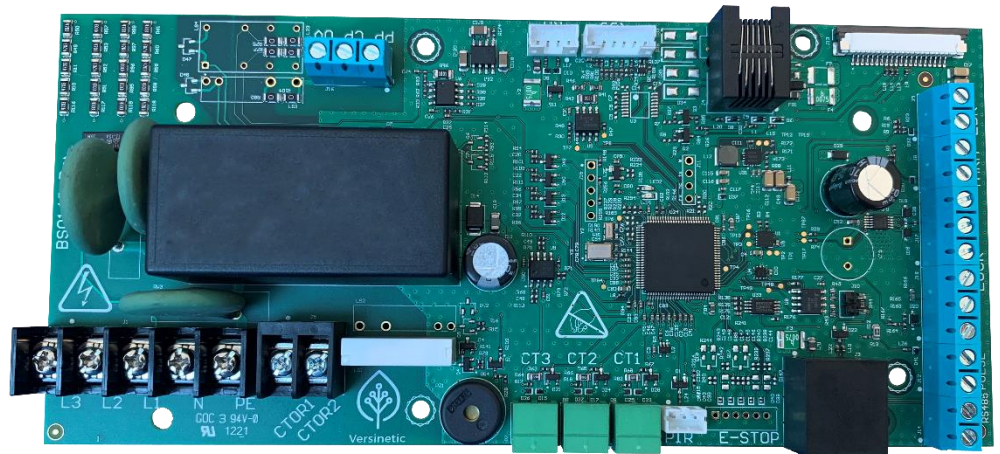


# Electric Vehicle Supply Equipment AC Charge Controller

## EEL is a BS EN IEC61851-1:2019 EVSE AC charge controller

**EEL** is a fully-compliant 61851 AC charge controller that has all the necessary interfaces for any single or 3-phase AC charge solution.

**EEL** requires very few external components to provide a complete off-the-shelf charging solution. Simply add a 3-pole



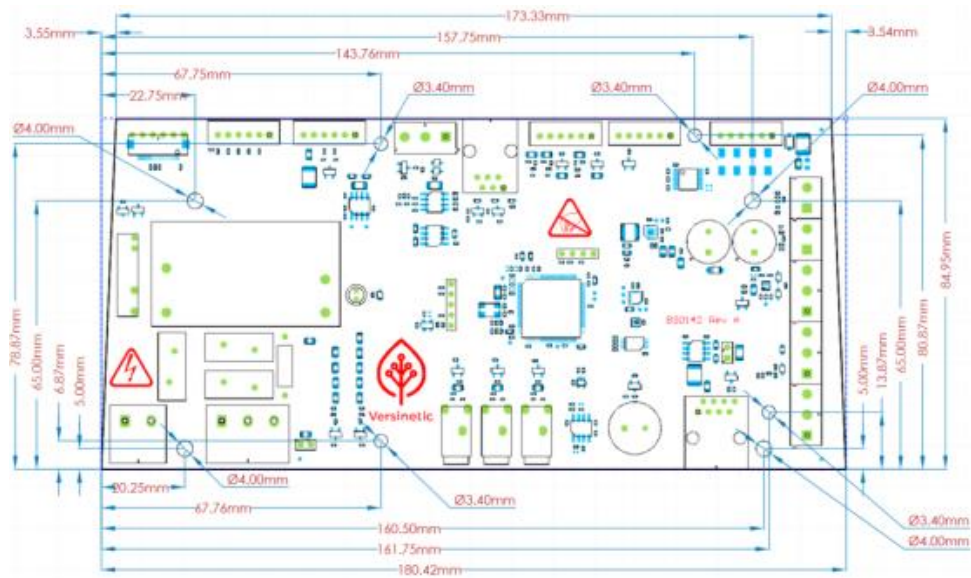
contactor and 6mA-RDC-DD to **EEL** for a single-phase AC charger. Smart charge capabilities can be added using **MantaRay** which complies with OLEV requirements.

**EEL** has plenty of flexible features to address all charger requirements. White LED illumination, RGB status LEDs and CT clamps can all be added for metering; PIR for motion; light sensors giving dimming to control status and white illumination LEDs; RFID reader interface for charge cards; RS485 for MID approved meters and a set of general purpose I/Os.

Applications for **EEL** include simple single- or dual-socket AC chargers for residential installations, through to large scale commercial or fleet installations.

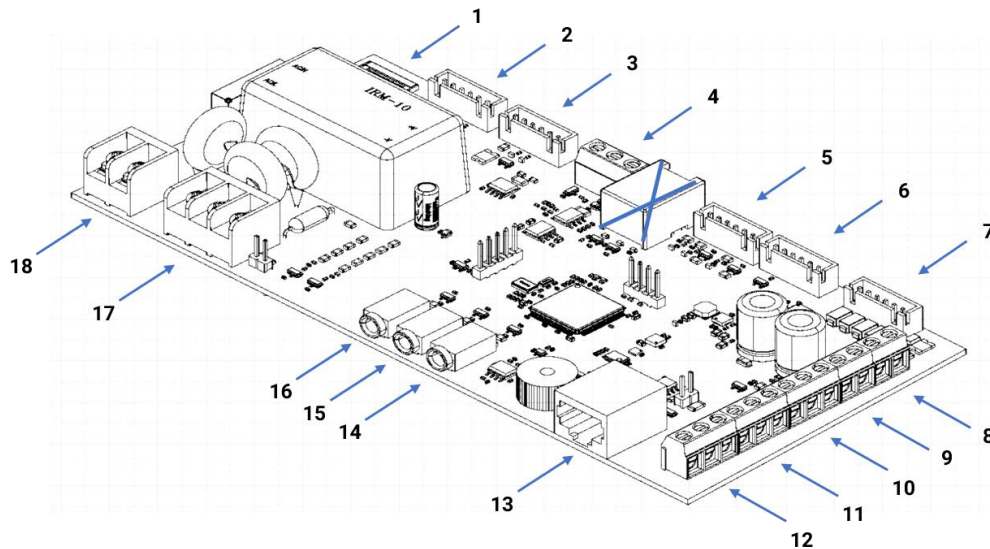
**EEL** has a number of companion boards allowing fully customisable charging solutions. Software modifications are available on request.

# Physical Dimensions



## Connectivity

Connector	Description
1	RGB and White LED
2	6mA RDC-DD
3	RS485 with 12V output(8W) control port
4	CP and PP
5	5 x GPIO
6	PIR
7	RS232 with 3.3V output (1W) for RFID
8	External Light sensor
9	External Temperature sensor
10	Lock actuator Motor for EV socket
11	Lock actuator sensor for EV socket
12	RS485 for mid meter
13	RS485 for digital CT clamps with 12V output(2W)
14	CT Clamp 1
15	CT Clamp 2
16	CT Clamp 3
17	110 to 240V AC input terminal block
18	Output to power contactor





# Electric Vehicle Supply Equipment AC Charge Controller

<b>Supply Voltage</b>	<b>85 – 264VAC</b>
<b>Power Consumption</b>	<b>10W peak</b>
<b>Communication</b>	<b>RS485 control port</b>
<b>Sound</b>	<b>Piezo buzzer</b>
<b>Input/Output</b>	<b>3 CT clamp inputs 5 x GPIOs RGB status LED port White LED illumination port External Thermistor External Light sensor Onboard Temperature Motion detection (Accelerometer) RS485 for External CT clamp module Broken Earth detector AC contactor control CP and PP signals RS232 interface for RFID reader</b>
<b>kWh-meter interface</b>	<b>Read out of kWh-meters through RS485 connection</b>
<b>Workable temperature</b>	<b>-25 °C till +70 °C, 5% till 95%, non-condensing</b>
<b>Temperature Control</b>	<b>On-board temperature sensor on PCB</b>
<b>Updates</b>	<b>Firmware update over control port</b>

## Contact Us

Versinetic  
2 Devon Way  
Longbridge Technology Park  
Birmingham  
B31 2TS  
United Kingdom

+44 121 222 5433  
getcharged@versinetic.com  
www.versinetic.com

Versinetic is a division of ByteSnap Design Ltd

©2021 Versinetic. All rights reserved.  
v1.1\_25022021